



CONRAD[®]

DUBLIN

NEVER JUST STAY. STAY INSPIRED.

WELCOME TO CONRAD DUBLIN

The award-winning, newly refurbished, Conrad Dublin features luxury business and leisure amenities in a premier city centre location. Located just opposite the National Concert Hall, on the quiet corner of St Stephen's Green, the hotel is heavily inspired and influenced by Dublin's rich literary culture and local heritage.

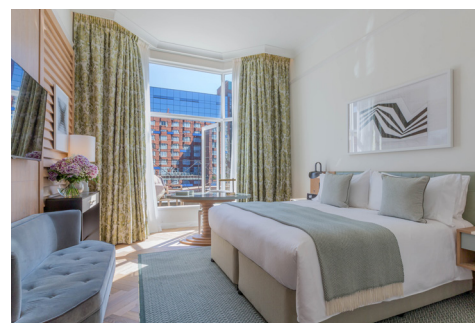
Conrad Dublin embraces contemporary Dublin with an authentic, yet effortlessly stylish twist.

We have curated a list of quintessential Dublin experiences called Conrad 1/3/5 because we understand that travelling isn't just about the destination, it's about the journey. Each experience reflects a local take on culture, art, food and adventure, so you can now make the most of your trip, even when time is at a premium.



GUEST ROOM INFORMATION

- 192 guest rooms including 15 suites, 25 Premier Kings, 55 King Deluxe rooms and a stunning Presidential suite
- Complimentary Wi-Fi throughout hotel
- 48 inch LED TV with premium channels
- iHome Bluetooth docking station
- Ergonomic workstation with data ports and international sockets
- USB charging points
- Luxury bathrobes and slippers
- Nespresso coffee machine
- Full array of personal amenities
- Marble bathroom
- 24 hour housekeeping
- Overnight complimentary shoeshine upon request
- Nightly turndown service
- Express pressing, same day and overnight laundry service (fees apply)
- Pillow menu and cribs available



MEETINGS & EVENTS

Leave your next meeting or conference in the professional hands of our elite Event Team at Conrad Dublin. The hotel offers ten impressive state-of-the-art conference & event spaces in the heart of Dublin, equipped with the latest technology.

Choose one of our Executive Boardrooms, which offer privacy and comfort for discreet meetings. Greet guests in the foyer and host a conference for up to 80 people in the Liffey, Dodder & Dargle Suites.

The prestigious Conrad Suite, featuring incredible Waterford crystal chandeliers, can be arranged to accommodate a wide array of meeting styles, including up to 270 guests for a stylish gala dinner.

Discover the Iveagh Suite: the ultimate venue for intimate gatherings, ideally suited for high end meetings and private dining, for up to 24 guests.



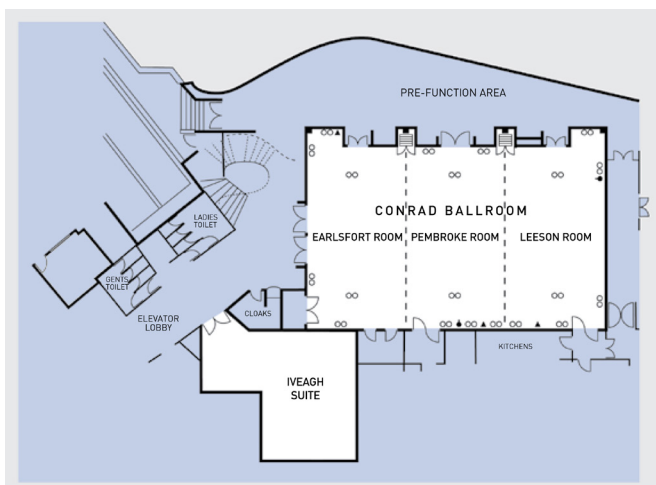
CONRAD FITNESS

- 24-hour full cardio workout and weight equipment
- Jogging route and maps available
- Access to world class golf courses - Portmarnock and Royal Dublin golf courses (30 minute drive)

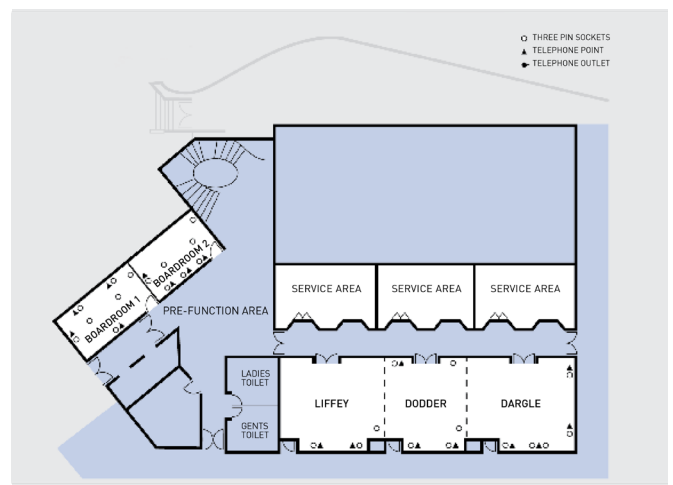
FUNCTION ROOM CAPACITIES

Meeting Room	Dinner Dance	Sit Down Dinner	Lunch/Dinner (with Bar in Room)	Classroom (Front Projection)	Classroom (Kitchen Wall Projection)	Cabaret (Front Projection)	Cabaret (Kitchen Wall Projection)	Theatre	U Shape (with Top Table)	U Shape (without Top Table)	Hollow Square	Boardroom	Boardroom (with Projection)	Reception	Breakfast Meeting	Buffet Set Up (in Room)	Buffet Set Up (in Pre-Function Room)
Ground Floor																	
Conrad Ballroom	250	270	160	132	110	192	144	350		60	90			350		220	240
Earlsfort		80		36		48		100		30	40			120		60	80
Pembroke		80		36		48		100		30	40			120		60	80
Leeson		80		36		48		100		30	40			120		60	80
1st Floor																	
Liffey		40		22		32		45	20	22	24	22	15	50	40	40	40
Dodder		40		22		32		45	20	22	24	22	15	50	40	40	40
Dargle		40		22		32		45	20	22	24	22	15	50	40	40	40
Liffey/Dodder		60												100	70	70	70
Dodder/Dargle		60		44		64		80						100	70	70	70
Liffey/Dodder/ Dargle		100		44				80						150			
Boardroom 1										11		12	11				
Boardroom 2										11		12	11				

GROUND FLOOR



FIRST FLOOR



DINING



THE COBURG

Take a seat in the stylish surroundings of The Coburg and experience a true brasserie conveniently located in the heart of Dublin city. The brasserie is open daily until 11pm so that you can enjoy a leisurely breakfast or a late night supper.

Enjoy elevated views over the restaurant whilst sipping on the finest selection of Champagnes at the Champagne table.

The menu at The Coburg features international dishes as well as traditional Irish cuisine, using locally sourced, natural ingredients. To keep things fresh, the menu changes with the seasons, to ensure an ever changing dining experience.



LEMUEL'S

Lemuel's, the dazzling lounge and bar, named after the famous fictional traveller Lemuel Gulliver, pays tribute to the magic and curiosity of Gulliver's Travels, an international classic of Irish literature. Visitors to Lemuel's will join a voyage of discovery that takes in new world wines, innovative cocktails crafted by expert mixologists, fine food and elegant afternoon teas with influences from around the globe.



ALFIE BYRNE'S BY GALWAY BAY BREWERY

Offering guests their choice of Irish craft beers, produced on a small scale to ensure authenticity, Alfie Byrne's is an exciting addition to the food and beverage offerings at the hotel.

Alfie Byrne's offers casual dining with a fantastic atmosphere. Take a seat on the terrace and enjoy dining al fresco with great views of the National Concert Hall.



LOCATION DETAILS



WHAT IS NEARBY:

- The National Concert Hall
- St Stephen's Green
- The Iveagh Gardens
- The Little Museum of Dublin
- Grafton Street
- Trinity College
- The National Museum of Ireland
- The National Gallery of Ireland

Earlsfort Terrace,
Dublin 2
D02 V562, Ireland

t: +353 1 602 8900
f: +353 1 676 5424

ConradDublin.com